

## NV8 Product Spare Part Overview

1.1 NV8 .....	2
1.2 Bezel.....	3
1.3 Main Parts And Components .....	5
1.4 Layers .....	8
1.5 Electronic Components .....	8



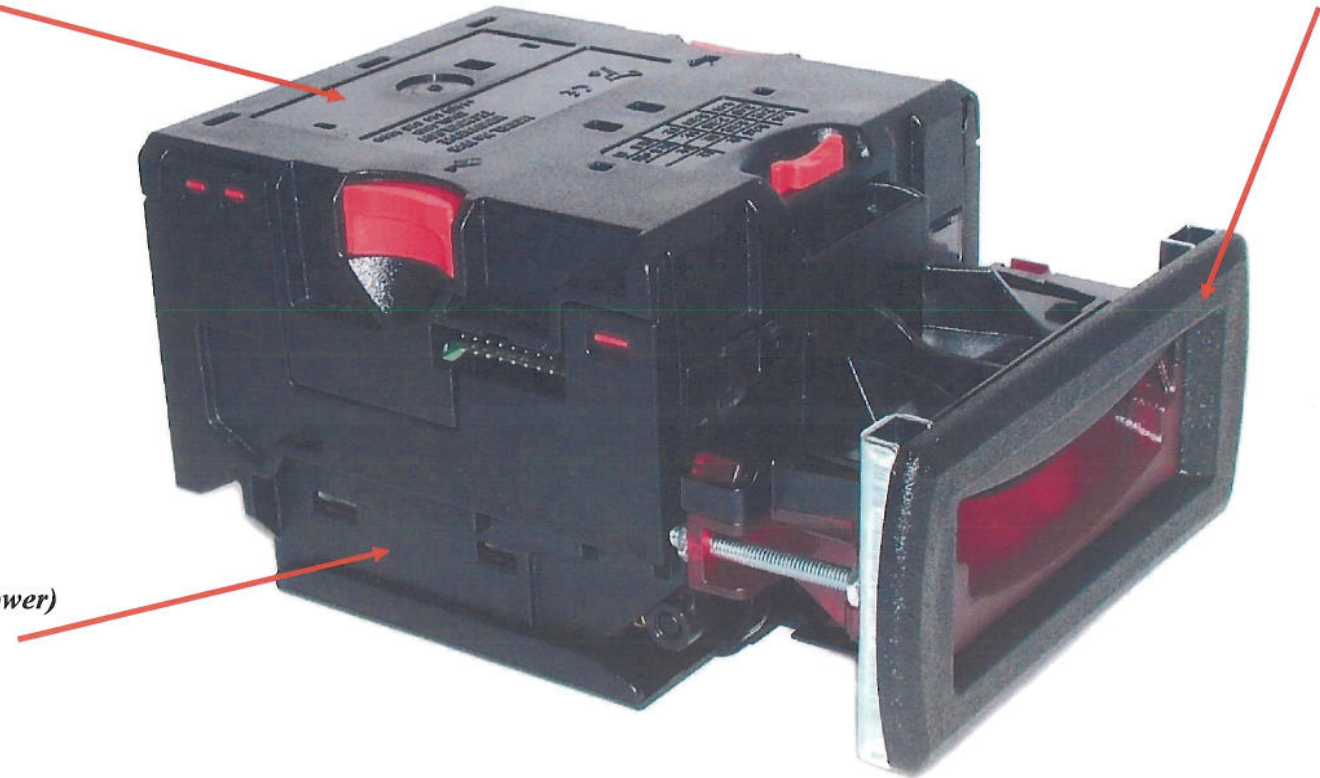
*A.u.S. Spielgeräte GesmbH*  
*Scheydggasse 48 A-1210 Wien*  
*Tel. +43-1-271 66 00 Fax. +43-1-271 66 00 75*  
*E-mail: [verkauf@aus.at](mailto:verkauf@aus.at)*  
*<http://www.aus.at> <http://www.garlando.at>*  
*Öffnungszeiten: Mo-Do 9-18 und Fr. 9-17 Uhr*

# NV8 Product Spare Part Overview

## 1.1 NV8

*Main Parts (Upper)*  
*(See Page 6)*

*Bezel Assembly*  
*(See Page 3)*



*Main Parts (Lower)*  
*(See Page 7)*

# NV8 Product Spare Part Overview

## 1.2 Bezel



**PA231**  
*Bezel Assembly*



**PA231BK**  
*Bezel Assembly (black)*



**PA255**  
*66mm Fixed Width Bezel*



**PA255BK**  
*66mm Fixed Width Bezel (black)*  
No response for any changes or errors



**PA266**  
*Extended Bezel Assembly*



**PA266BK**  
*Extended Bezel Assembly (black)*

## NV8 Product Spare Part Overview



**PA267**  
*Extended Bezel Assembly 66mm*



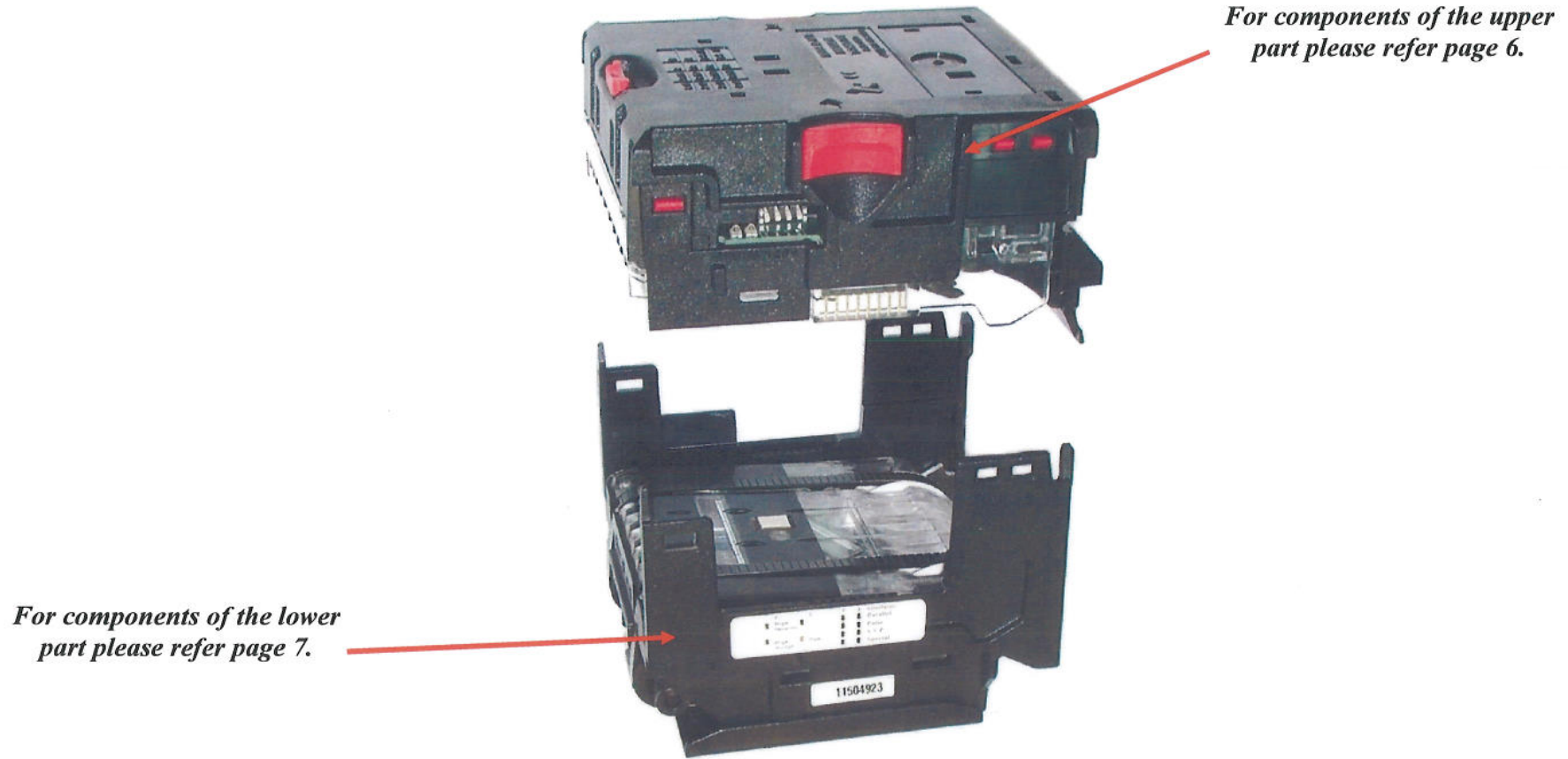
**PA267BK**  
*Extended Bezel Assembly 66mm  
(black)*



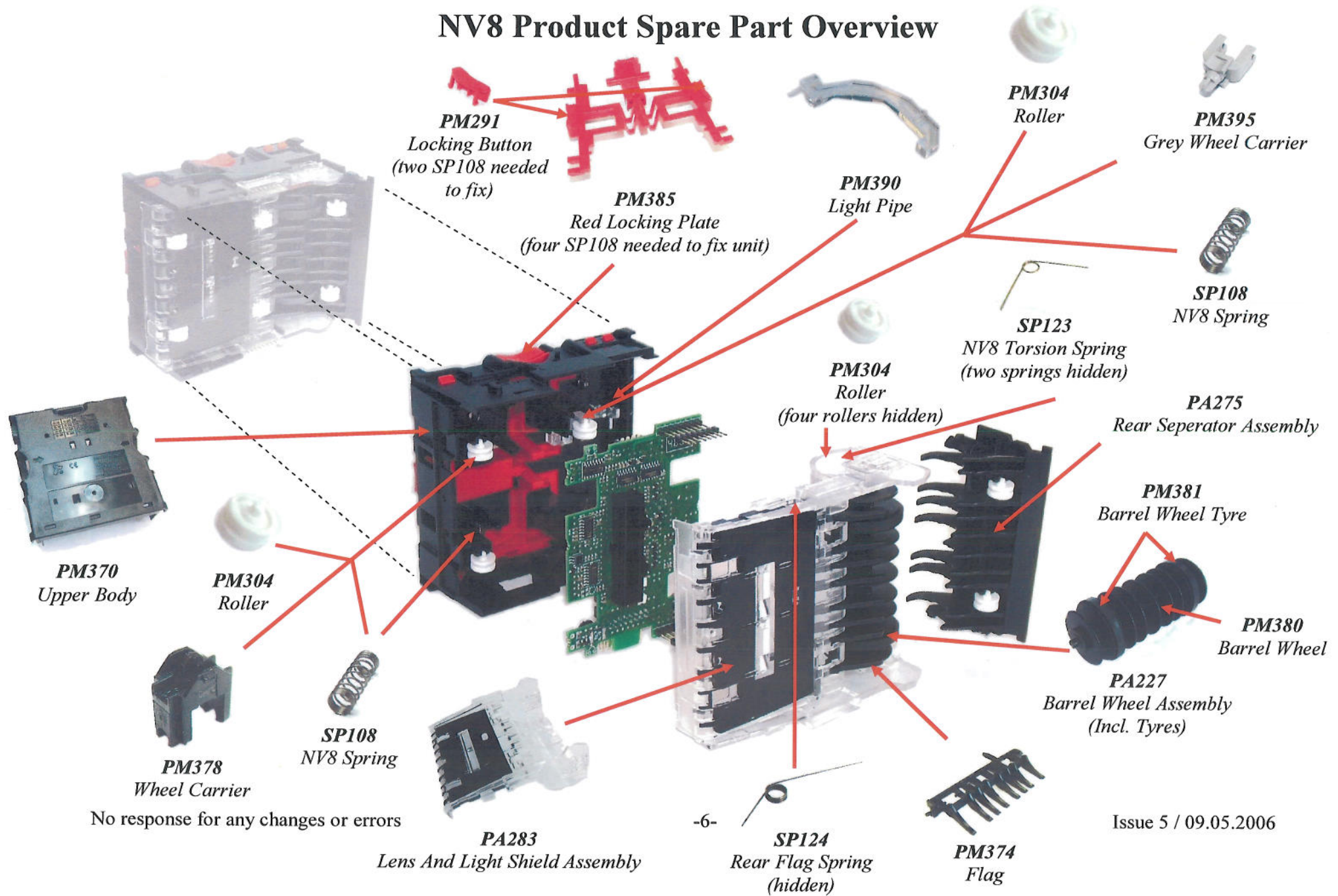
**PA258**  
*NV8 To NV4 Standard Bezel  
Adaptor Plate*

# NV8 Product Spare Part Overview

## 1.3 Main Parts And Components



# NV8 Product Spare Part Overview

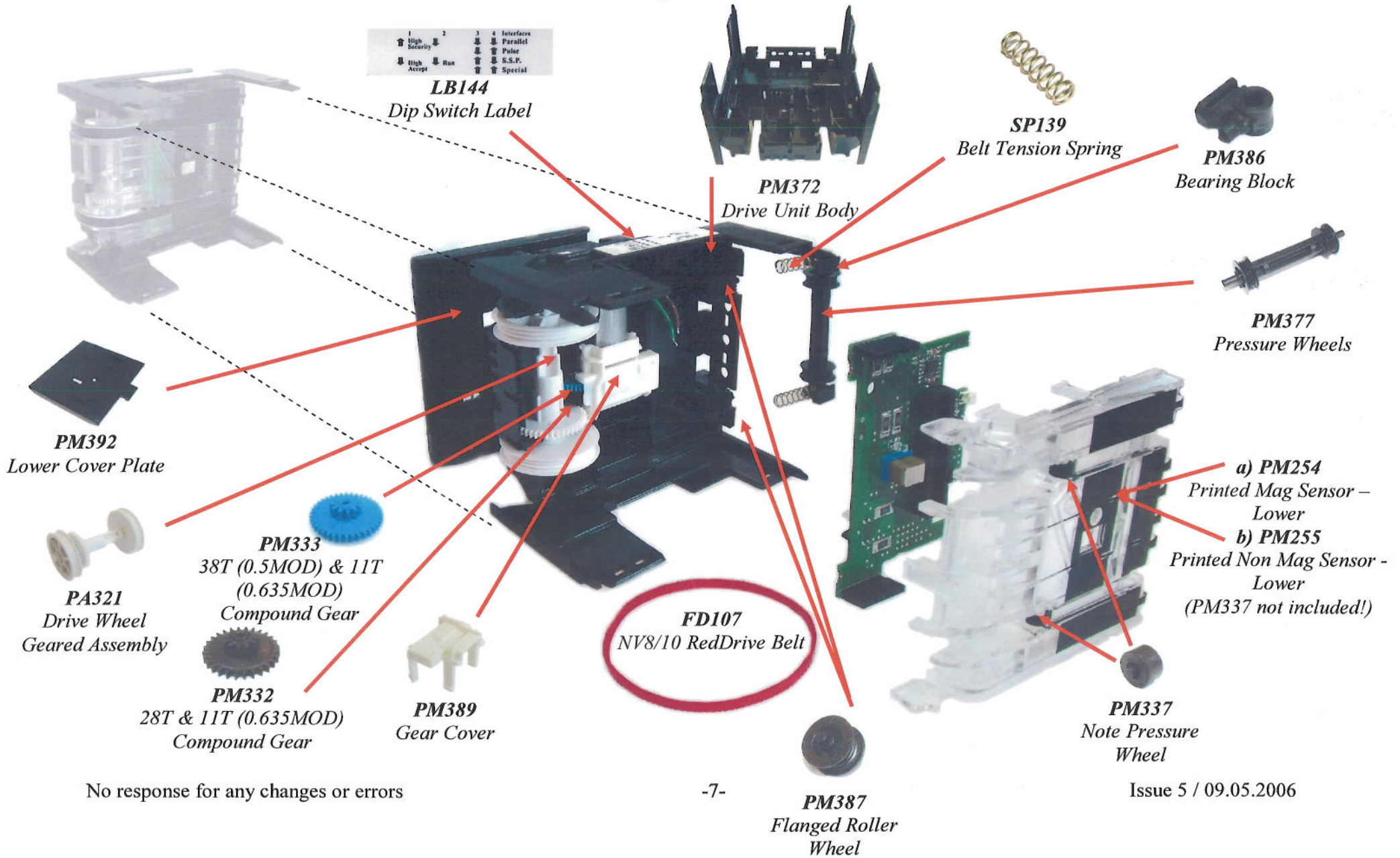


No response for any changes or errors

Issue 5 / 09.05.2006

# NV8 Product Spare Part Overview

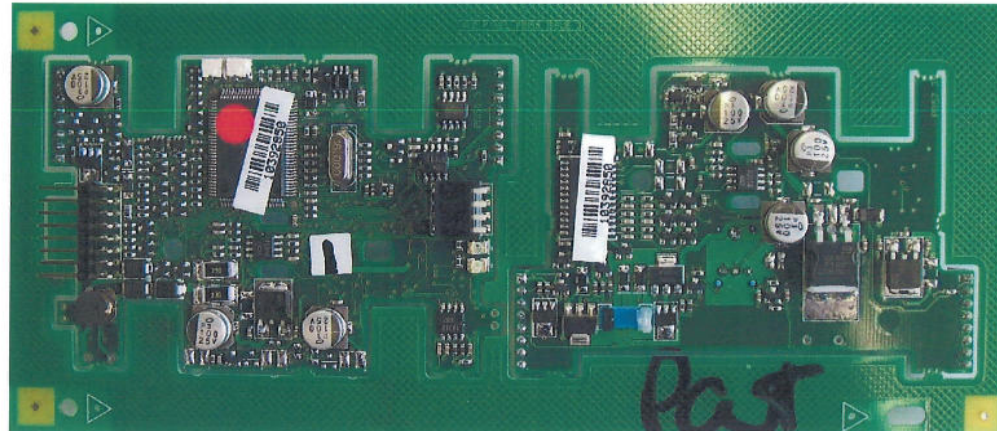
1	2	3	4	Interface
High Security	High Accept	Run	Parallel	Parallel
				Pulse
				S.S.P.
				Special



No response for any changes or errors

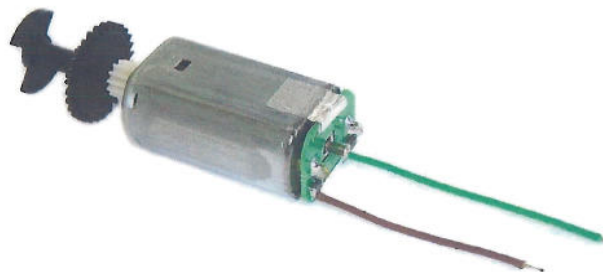
# NV8 Product Spare Part Overview

## 1.4 Layers



**PB182\_CNV\_MAG**  
*Half Panel With Conventional Comps With Mag Sensor*

## 1.5 Electronic Components



**PA240**  
*Motor Ass'y With Wires*